

Figure 7.29 - Indicative Plan for Turnpike Lane

#### Option for Ducketts Common

Ducketts Common also presents opportunities for improvement (Figure 7.30). At present this is a very important public space, and is particularly well used for basketball. However, consideration will be given to the need to review the quantity and location of facilities in the future.

Increasing the maintenance and utilisation of the space would have the added benefit of reducing anti-social behaviour, and would help to encourage a greater number of shoppers and visitors to Wood Green. Improved public toilet facilities should be incorporated into any new amenity buildings developed in the future.



*Ducketts Common*

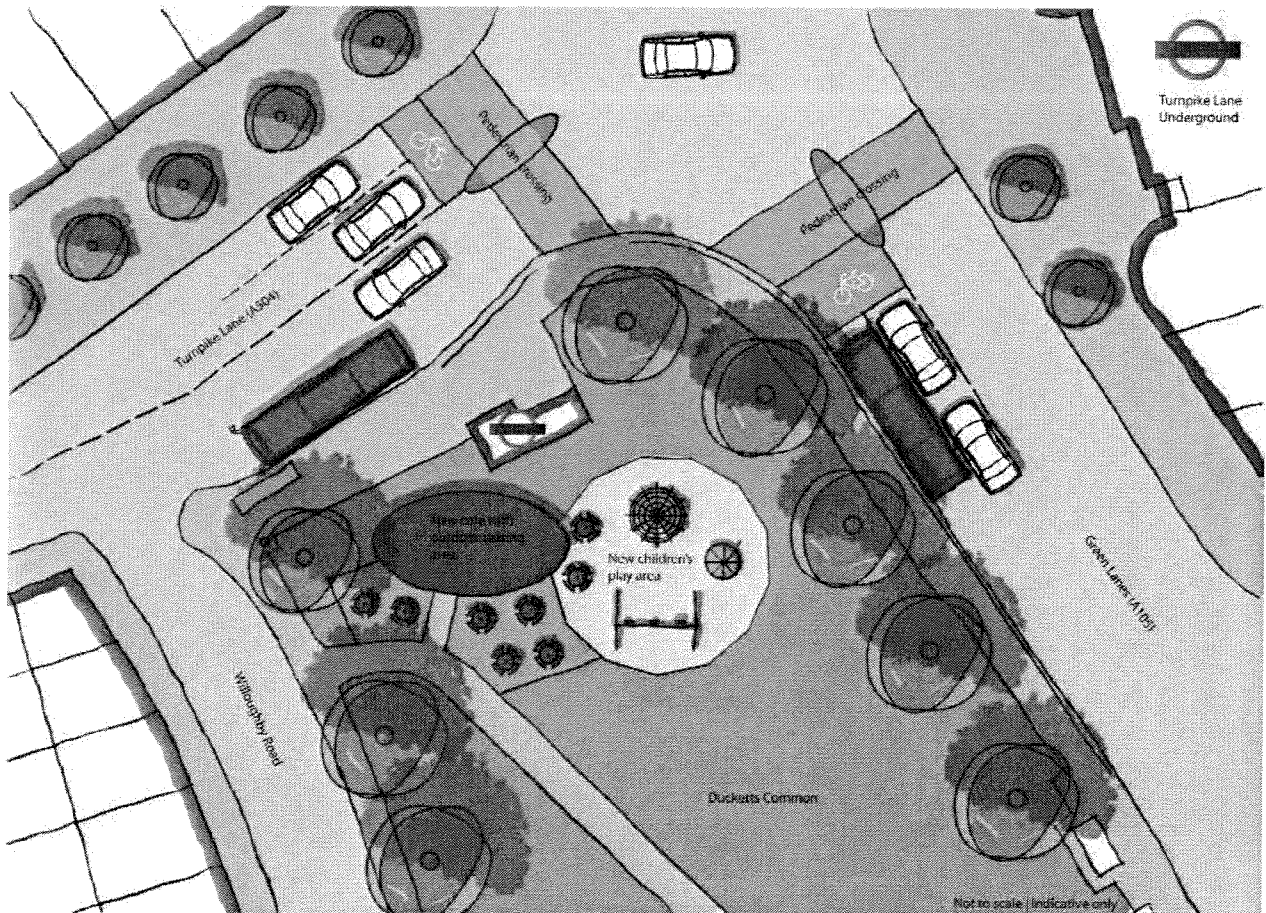


Figure 7.30 - Indicative Plan for Ducketts Common

#### Options for new urban green space and public realm improvements

Improvement to the public realm throughout Wood Green town centre would help to 'soften' and 'green' the pedestrian environment, and create a more welcoming space for visitors and shoppers. Creating a more pleasant High Road environment will also help to encourage shoppers to stay longer, and is therefore likely to benefit local businesses.

As illustrated in Figure 7.32, a network of green spaces should be implemented which spans the

length of the High Road. This will ensure that open space and greenery is visible throughout.

Figure 7.31 provides an indicative example of the type of improvements which could be made to one of the open spaces within the network along the High Road.

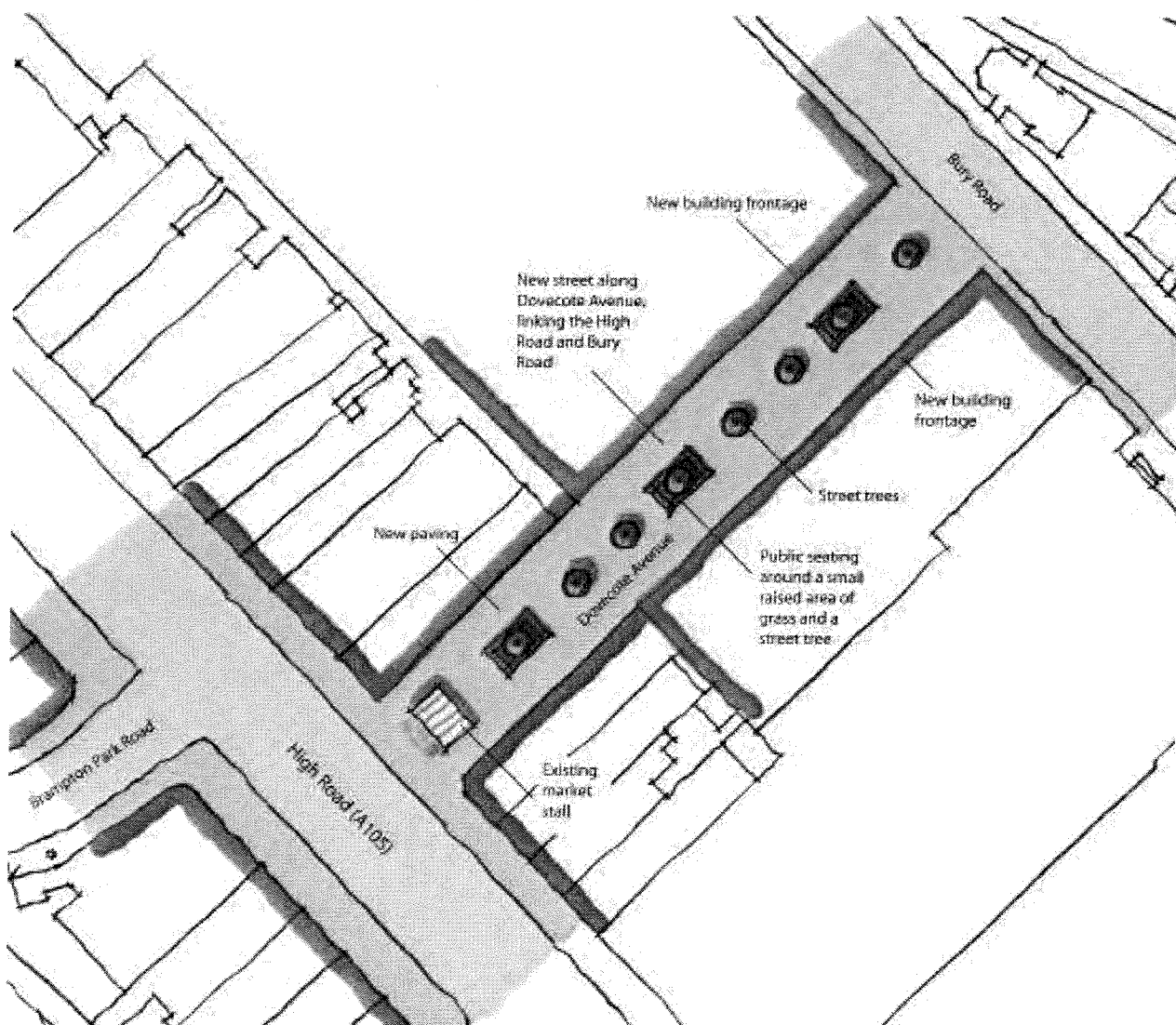


Figure 7.31 - Indicative Plan of Public Realm Improvements (Dovecote Avenue)



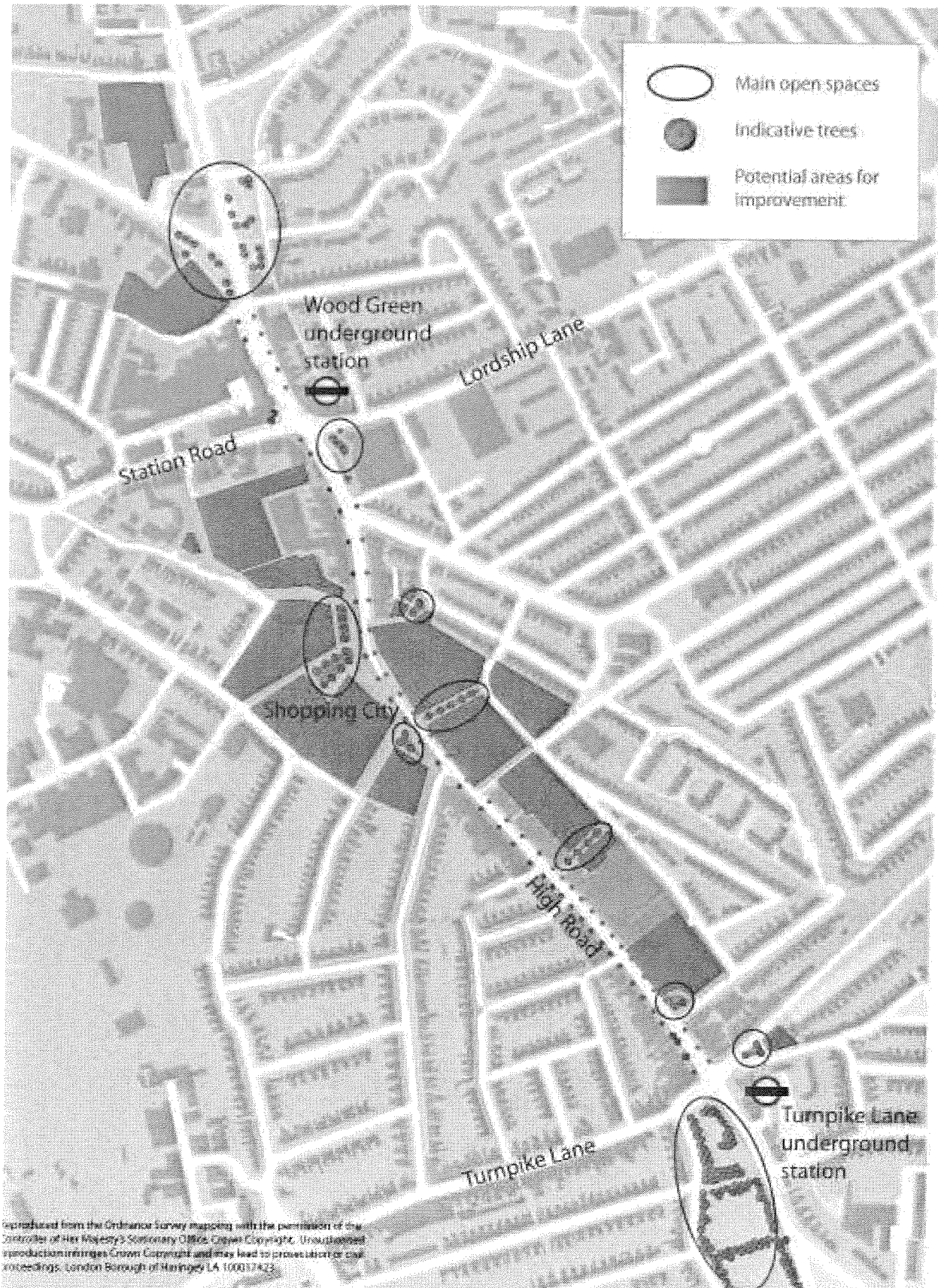
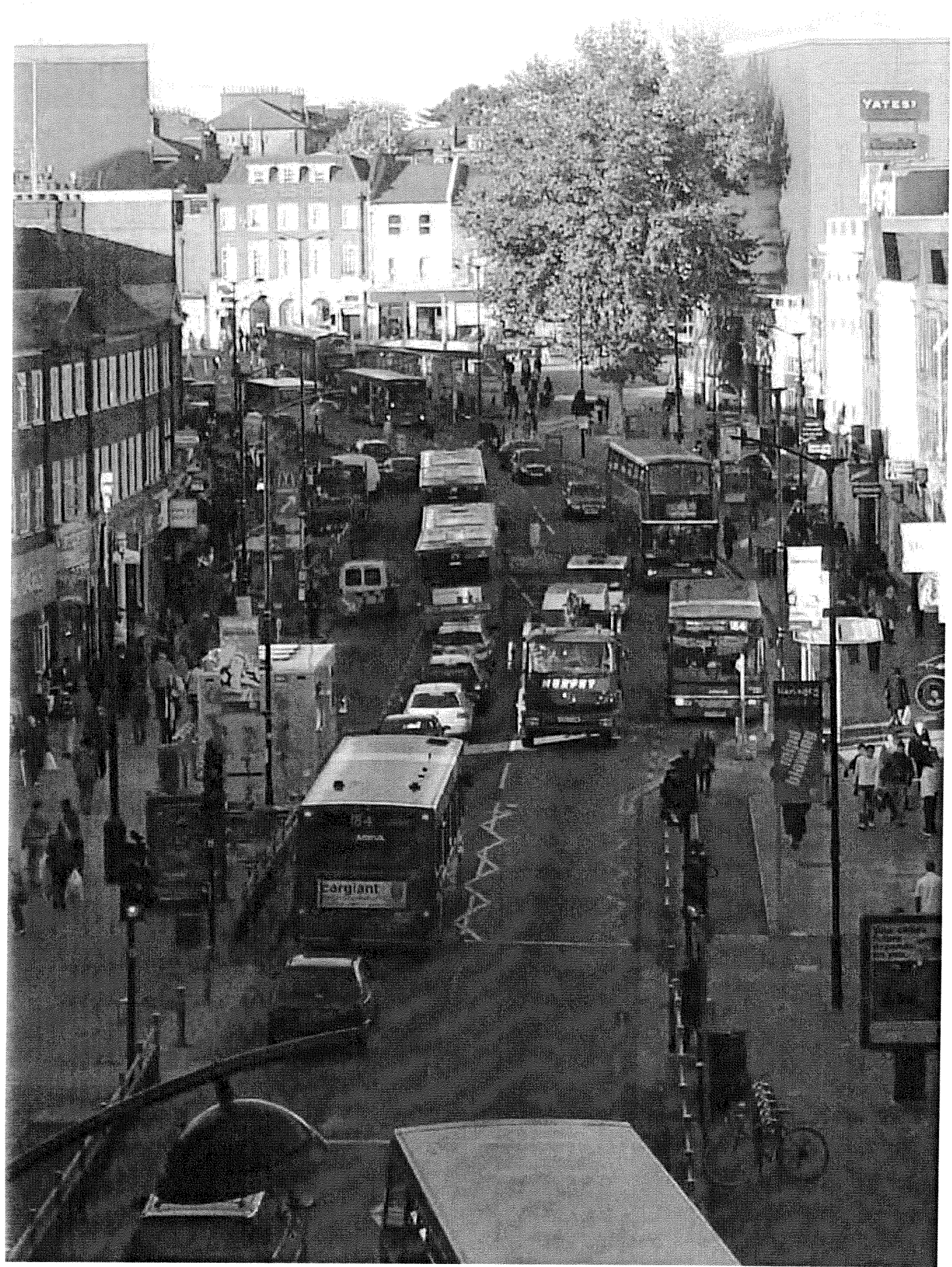


Figure 7.32 - Indicative Plan for Public Realm Improvements in Wood Green Town Centre





## 8 Delivery and Implementation

### Introduction

Delivering the proposals outlined in this SPD is a long-term process. Even for individual sites and potentially attractive areas, the development process can take a number of years from inception to completion. The successful implementation and delivery of the proposals and guidance contained within this SPD will require the support of key stakeholders.

### Indicative Phasing

Figure 8.1 demonstrates the indicative phasing of the relevant proposals set out in this SPD which require delivery and implementation. The table sets out the proposals, partners, indicative timescale (short, medium or long-term) and further comments.

In terms of the timescales, the definition is as follows:

- Short term: 0-5 years
- Medium term: 5-10 years
- Long term: 10+ years



*Shopping City*